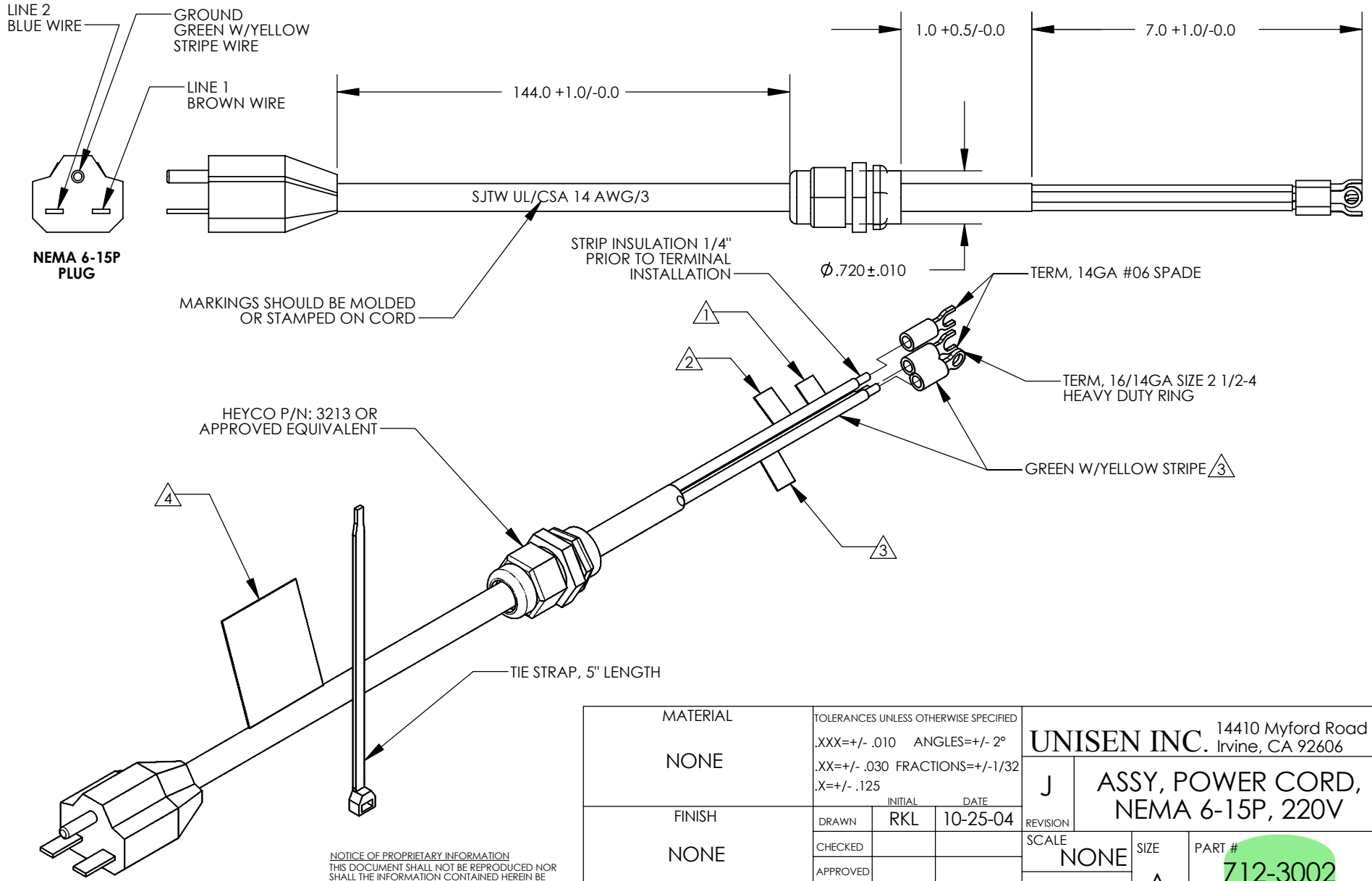


NOTES:

- 1 PRINT "L1" ON THE LABEL FOR "LINE 1" AND ATTACH IT TO BROWN WIRE.
- 2 PRINT "L2" ON THE LABEL FOR "LINE 2" AND ATTACH IT TO BLUE WIRE.
- 3 TAG & BAG WITH STAR TRAC P/N, REVISION AND DATE OF MANUFACTURE, APPROX. AS SHOWN.
- 4 CAUTION INFORMATION LABEL P/N: 050-0454.

REVISIONS

LTR	DATE	DESCRIPTION	ECO#	CHG BY
J	04-13-05	DRAWING IS CONVERTED FROM CADKEY. ALL PREVIOUS REV. ARE IN CADKEY. UPDATE DRAWING TO SHOW AS A MOLDED PLUG. ADD DETAILS TO DRAWING.	11252	RKL



MARKINGS SHOULD BE MOLDED OR STAMPED ON CORD

HEYCO P/N: 3213 OR APPROVED EQUIVALENT

TIE STRAP, 5" LENGTH

NOTICE OF PROPRIETARY INFORMATION
THIS DOCUMENT SHALL NOT BE REPRODUCED NOR SHALL THE INFORMATION CONTAINED HEREIN BE USED BY OR DISCLOSED TO OTHER EXCEPT AS EXPRESSLY AUTHORIZED BY UNISEN

MATERIAL	TOLERANCES UNLESS OTHERWISE SPECIFIED		
NONE	.XXX=+/- .010	ANGLES=+/- 2°	
	.XX=+/- .030	FRACTIONS=+/- 1/32	
	.X=+/- .125		
FINISH	DRAWN	INITIAL	DATE
NONE		RKL	10-25-04
	CHECKED		
	APPROVED		
	U.O.M.	INCH	

UNISEN INC. 14410 Myford Road
Irvine, CA 92606

J ASSY, POWER CORD,
NEMA 6-15P, 220V

REVISION: J
SCALE: NONE
SIZE: A
PART #: 712-3002
SHEET 1 OF 1